



THE **BEGINNER'S** GUIDE TO IMPACT!



GLIDE-LINE™

Thanks for taking the time to download our Beginner's Guide to IMPACT!

Are you a design or application engineer? We know you've been searching for a better conveyor configurator. We shared the same frustration, so we built a "better mousetrap."

Want to know how IMPACT! (Interactive Modeling Program and Configuration Tools) delivers better conveyor and automation device design solutions in less time? Read on to learn why we built IMPACT!, and how it has changed the workflow of many of our clients.

Why We Built IMPACT!

IMPACT! was born out of frustration. Reliance on slow human responses and fundamental issues with online model configuration slowed down the design process. Our engineers wanted greater flexibility in their CAD modeling process. Our customers needed better solutions in less time.

Instead of shaking our heads and throwing our arms up in frustration, we took action. Our Research and Design Engineer, [Ron Schwar](#), built a solution to address all these major pain points:

- Tedious manual work (re-configuring, re-downloading, re-inserting) with each model change from online based solutions offering models that are only configurable online, not in the Solidworks modeling environment.
- Endless back-and-forth between the customer and vendors, delaying the CAD modeling process.
- Inability to evaluate throughput, weights, lengths, and capacities within the conveyor design
- Lag time between design and accurate pricing
- Lack of snap-to-mating in the CAD software
- Inability to see device actuations in various operation states (motion states)
- All that and a bag of chips (if "chips"=seamless integration with SOLIDWORKS).

It was a tall order, but Glide-Line found a way. IMPACT! tightly integrates a custom Excel workbook with Solidworks to produce an in-context CAD configurator that updates your parts requirements/pricing in real time.

The software we created completely automates the part configuration and pricing process. This means less time waiting for human responses and instant feedback!

What IMPACT! Delivers to Conveyor Design and Application Engineers

Designers and Application Engineers produce better results in less time with IMPACT!

IMPACT! means significant time savings. IMPACT! means automated updates to CAD models directly in Solidworks. IMPACT! means no more manual downloading and reinsertions of models into your master assembly.



“I love two things. Accurate CAD files with high detail, and the time this software saves me.”

– DeWayne Merritt, Engineer at AutoLiv

IMPACT! takes what's possible with customization and raises it to a whole other level! Highly configurable models allow for easy changes. No matter the level of specification, with IMPACT! you can quickly model (or reconfigure a model) and price (or reprice) a solution.

Registering Your IMPACT! Software: How to Do it (and Why it Matters)

While you can use IMPACT! without registering, by registering your copy of Impact!, you will receive instructions to enable you to download the latest pricing and utility data files and registering online means that you always have the most accurate and up-to-date pricing.

Registration also ensures you'll receive all the latest developments/updates to IMPACT! Register your software via the link [here](#) to receive further instructions from Glide-Line. These instructions include several quick video demos. Our demos dive deeper into maximizing your use of IMPACT!

A solid understanding of IMPACT! opens up a wider range of possibilities. Our unique conveyor configurator software is user friendly, but extensive.

After learning from your videos, check out our [resource section](#) for further tips and info. The last section of this eBook contains an extensive checklist to help you get the most out of IMPACT!



GLIDE-LINE.COM/IMPACT-RESOURCE-LIBRARY

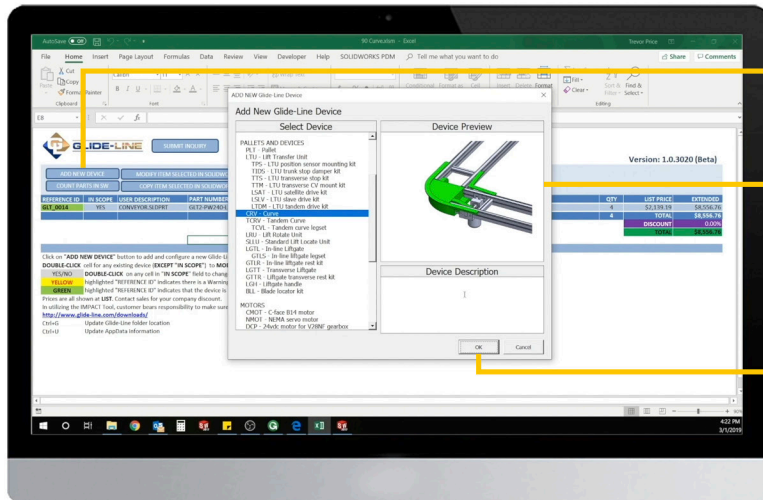


Step-by-Step Guide To Modeling Your Next Design in IMPACT!

To get you started using IMPACT!, our team has created a series of detailed video tutorials. For a first-time user, our videos may go through the “how-to” process too quickly. Or schedule a [live demo, here!](#)

We'll admit tutorial videos are harder learning tools. To give you extra details, we've written out instructions (with screenshots) for an example device (we used a curve).

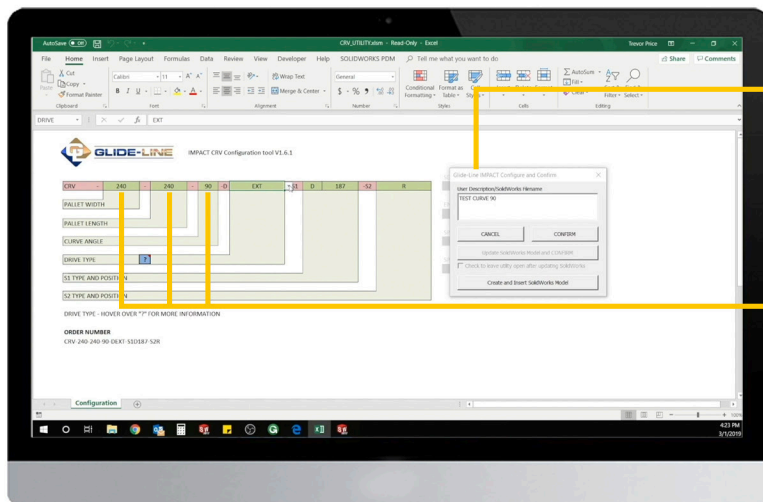
Take a look at the following manual to help you get acquainted with IMPACT!



1 On the Summary Screen, select “ADD NEW DEVICE”.

2 From the drop-down list, Select the device you wish to design (for our example, we'll select “CRV-CURVE”).

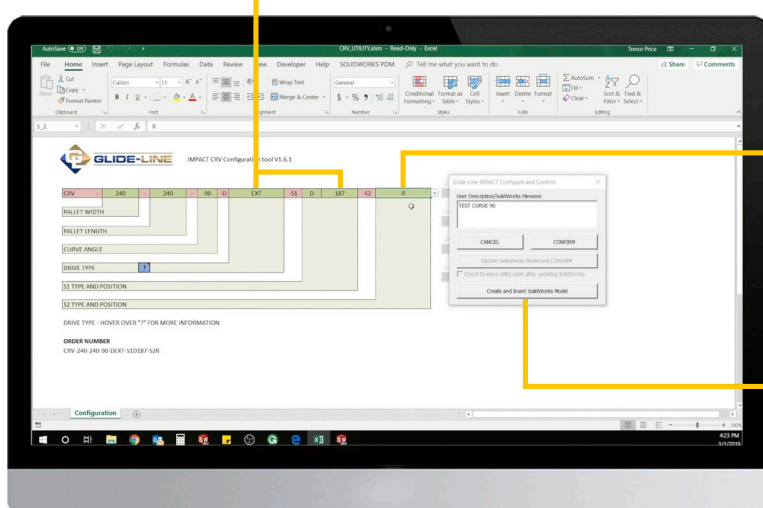
3 After selecting “CRV-CURVE”, click “OK”.



4 This brings you to the “IMPACT CRV Configuration Tool”.

5 This page will first ask you to add a user description. Type a name specific to your application. For our example, we will name it “TEST CURVE 90”.

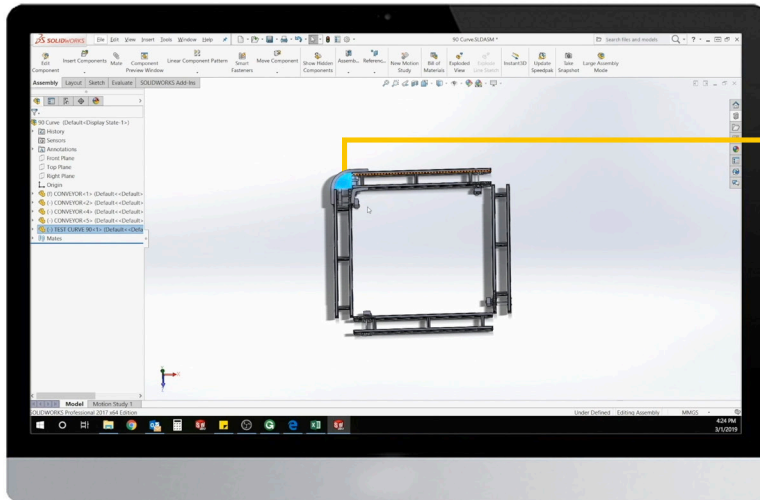
6 After naming the demo, we will configure the curve to have a 90 degree angle that can handle a 240 by 240 pallet.



7 For “Drive Type”, we will select “EXT” (External Drive). Configuring drive type to EXT will default Side 1 Type to a drive position of 187mm. You can make it longer, but it cannot be made shorter than 187mm.

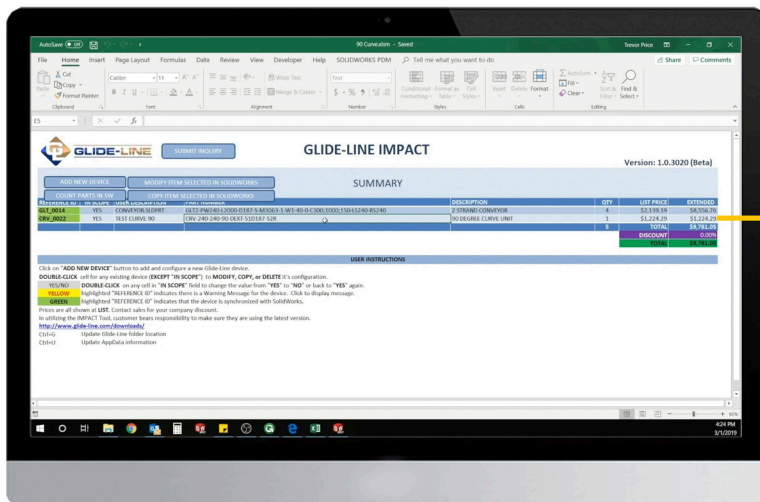
8 For Side 2, select “R” for return side.

9 We are now ready to enter our curve into the model. Select “CREATE AND INSERT SOLIDWORKS MODEL”.

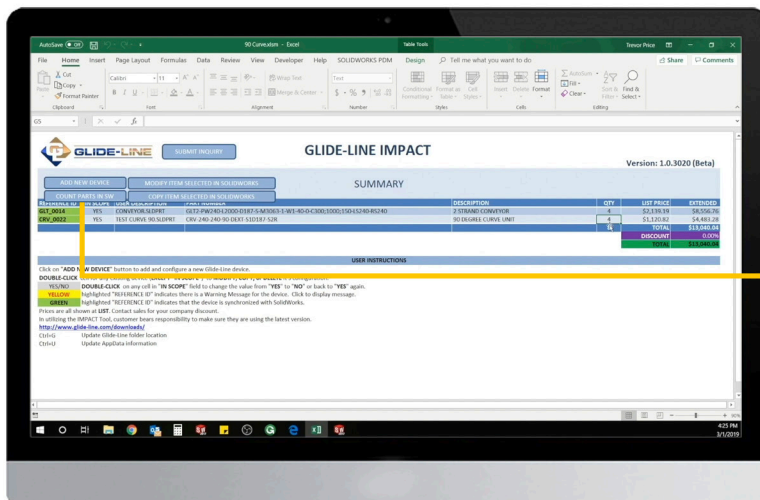


10 A screen will pop up asking you to either select an entity in your Solidworks assembly to insert the model. If you do not select an entity, by default the Curve will be placed at your assembly origin. Click "OK" for the Curve to be placed in the default position.

11 The Curve is now added to your SOLIDWORKS model. With snap-to-mating, you can drop it into the correct place. You can see that the drive portion lines perfectly with the shaft already in place on the conveyor model.



12 Switch back to the "IMPACT Configuration" Excel sheet. Click "Confirm". You will now see your updated IMPACT! Summary Sheet. The curve is now added to the summary sheet, with specific part number and pricing information updated.



13 If you want to add additional curves to your model, go back to the SOLIDWORKS model. To create duplicate units, copy the curve, pre-orient it so it fits on the corresponding side, and snap it into place.

14 Going back to the summary sheet, you can update your pricing by selecting "Count Parts in SW". This will add the 3 additional curves to your parts and pricing summary.



Top 3 Questions Regarding IMPACT!

1 HOW MUCH DOES IMPACT! COST?

IMPACT! is completely free! Seriously, all you need to do is download the software to start making your life easier!

2 HOW WELL DOES IMPACT! INTEGRATE WITH SOLIDWORKS?

IMPACT! works seamlessly with SOLIDWORKS, with no extra process steps required after download. At its core, IMPACT! is an Excel workbook tied to Glide-Line models with a sophisticated bridge between the two of them. So, there isn't even software to install, just files to locate in the correct location!

3 WHAT TYPE OF TRAINING DOES IMPACT! REQUIRE?

IMPACT! is easy-to-learn and easy-to-use! Once you register your copy of IMPACT! we'll send you a series of instructional videos to teach you how to use the software as quickly as possible. If you require additional training/support, please check out our IMPACT! Resource Library. With our [free demo](#) offer, a Glide-Line representative will walk you through installing and you'll quickly become an expert in IMPACT!



Our 5 Point Checklist to Get Started With IMPACT!

The [IMPACT! Resource Library](#) contains a treasure trove of info to help you get started. If you're just starting out using IMPACT!, it's likely you have additional questions.

We are more than happy to answer them! In fact, through our collection of blog posts and videos, you can likely figure out the answer yourself in a matter of minutes.

Take a look at the checklist below to help you become an expert in IMPACT!



STEP 1: DOWNLOAD IMPACT!

Downloading IMPACT! is a quick and easy process. To get started, [click here](#) to download the software.

Once on this page, select "FREE DOWNLOAD" on the left side.

The latest IMPACT! configuration software can be used in Excel only OR Excel & Solidworks mode. First time users should download the Quick Start Instructions to get started.



FREE DOWNLOAD



STEP 2: UTILIZE OUR QUICK START INSTRUCTIONS

Use our [Quick Start](#) guide to give you the instructions on saving the IMPACT! configuration software to your machine and how to get started. (We recommend using Explorer or Edge as your browser when downloading IMPACT!)



STEP 3: CHECK OUT OUR COLLECTION OF IMPACT! INSTRUCTIONAL VIDEOS

To help get you started, we have created a series of video tutorials explaining our most common conveyor solutions:

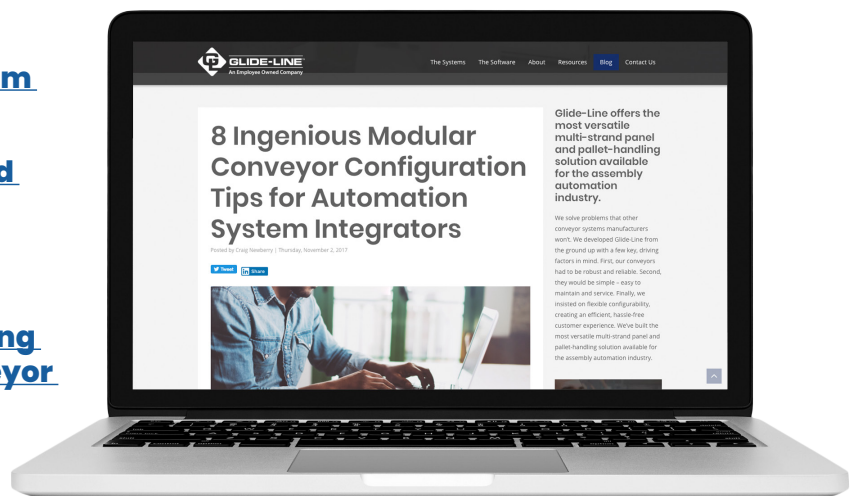
- ☐ [How To Use IMPACT!](#)
- ☐ [How To Configure a Pallet in IMPACT!](#)
- ☐ [How To Configure a 360 Shuttle in IMPACT!](#)
- ☐ [How To Customize Multi-Strand Conveyors And Easily Calculate The Cost Of Your Conveyor System](#)
- ☐ [How To Configure A Lift And Transfer Unit in IMPACT!](#)
- ☐ [How To Configure A Lift And Locate Unit in IMPACT!](#)
- ☐ [How To Configure A Curve in IMPACT!](#)



STEP 4: READ OUR COLLECTION OF ARTICLES TO ANSWER ADDITIONAL QUESTIONS

Get the most out of IMPACT! Our blog series has additional details on improving your use of IMPACT!

- ☐ [3 Surprising Ways to WOW Your Customer with Assembly Automation Production Conveyor System Designs](#)
- ☐ [8 Ingenious Modular Conveyor Configuration Tips for Automation System Integrators](#)
- ☐ [5 Common Issues To Avoid With Custom Conveyor Designs](#)
- ☐ [An Alternative to Downloading & Re-inserting CAD Models: Better Conveyor Design Software](#)





STEP 5: START BUILDING YOUR FIRST MODEL WITH IMPACT!

You've gone through our resource library. School's out, and now it's time to put these lessons into action! Start building your first model with IMPACT! If you come across a challenge, remember you can always refer to the resource library.

Need more help becoming an IMPACT! expert? Interested in training your design team on IMPACT! Want a thorough walk-through of how the software works? Consider our [free demo](#) option!

Access your IMPACT! demo today and we will walk you through the process of setting up the software all the way to becoming an expert. You'll be surprised just how easy IMPACT! is to use... let us show you!

We hope you found our Beginner's Guide to IMPACT! “impactful” in getting started building better models in less time!

Still not sold? Consider checking out this additional info on what IMPACT! can deliver to your conveyor design process:

BLOG: [You've Been Looking for a Better Conveyor Configurator: Here It Is](#)

BLOG: [An Alternative to Downloading & Re-inserting CAD Models: Better Conveyor Design Software](#)

This case study further details IMPACTS! “impact” on improving conveyor configuration:

CASE STUDY: [Glide-Line's IMPACT! featured in national Solidworks Case Study!](#)

