



## System Template Instructions V1.1

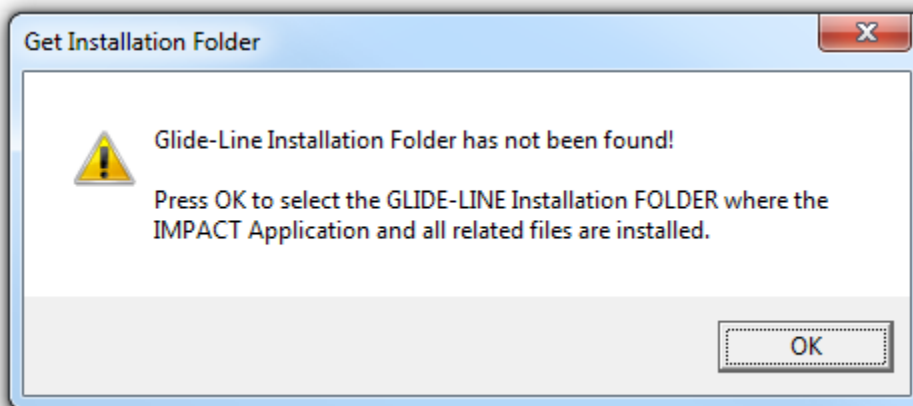
Download the desired System Template .zip file From the Glide-Line website. This .zip file contains the IMPACT configurator, SolidWorks Assembly, and supporting SolidWorks Parts files. Simply extract and place this folder and file in a common location that can be accessed by anyone intending to use the Template.

- .25 HP MOTOR
- 90 SLAVE CURVE 1
- CV-101
- CV-102 TRANSVERSE UNIT
- Glide-Line IMPACT 90 Curve Loop
- Glide-Line IMPACT 90 Curve Loop
- STANDARD LEGSET 1
- TANDEM LEGSET 1

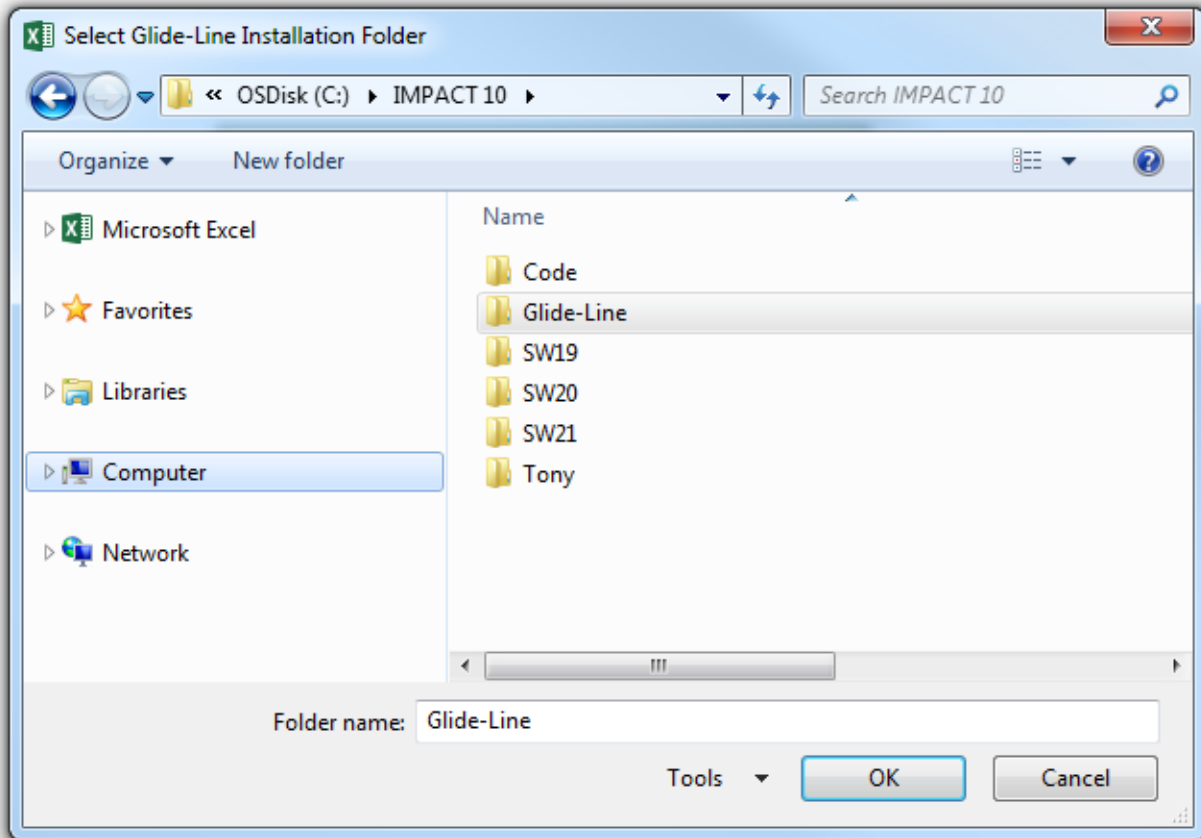
### The Glide-Line IMPACT Master project file

The Glide-Line IMPACT project workbook file is the predefined EXCEL workbook that users will interact with. Copied IMPACT project files can be placed anywhere on your machine or network and there's no limit to the number of copies that can exist. The IMPACT project workbook just needs to remain named exactly the same as the downloaded SolidWorks assembly.

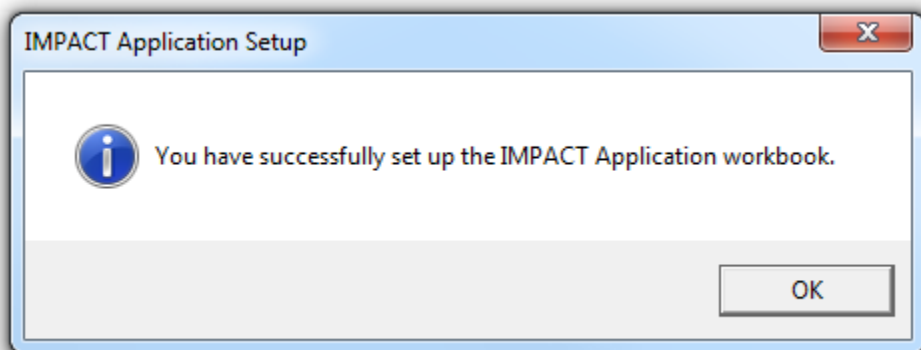
Once you've made an IMPACT project specific copy, open it. Please enable macros if you are prompted to do so. The first time you open a new copy, you will see the following dialog...



Press OK and browse to the Glide-Line folder that you placed in a common location.



Simply highlight the Glide-Line folder as shown above and press OK.



You will see this dialog confirming that your IMPACT project workbook has been successfully setup.

**Tip:** To avoid having to go through the setup procedure each time you create a new IMPACT project file copy, set one up and make it your internal master and make copies from that master as you need them.

You can move the Glide-Line data folder if necessary. If you have to move it, make sure no active IMPACT project workbooks are open. The next time any IMPACT project file is opened, it'll indicate that it can't find the installation folder and ask you to browse to its new location.

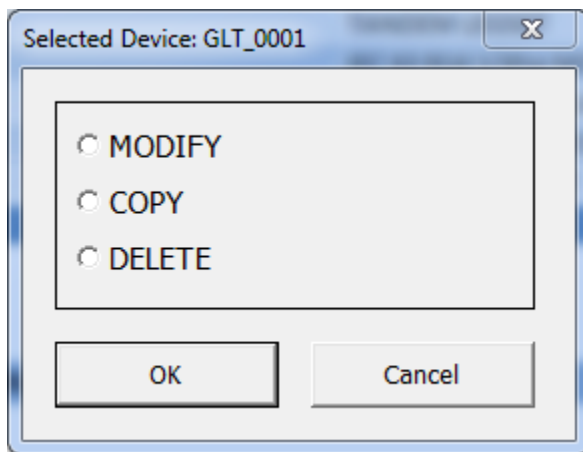
# Using IMPACT with SolidWorks

IMPACT allows the user to create and configure Glide-Line conveyor and device models in the context of their SolidWorks environment.

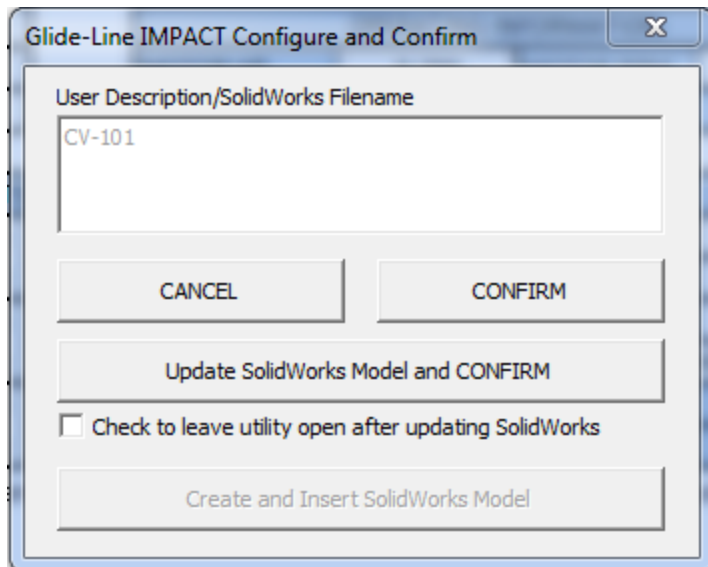
To use IMPACT Template workbook to create configure and manage your Glide-Line conveyor and device models simply open the SolidWorks assembly named the same as your IMPACT Template workbook. The SolidWorks assembly needs to be open and active for IMPACT to interact with it.

## Modify Item Selected in SolidWorks

By starting with this IMPACT Template workbook, the user can select the items they wish to modify by double clicking on a line item and choosing to modify.



Once the desired changes to the conveyor or device have been made updating the open SolidWorks model, named the same as the IMPACT Template workbook, is as easy as selecting the Update Solidworks Model and Confirm button.



This process of modifying the conveyors and equipment can be repeated as many times as necessary in order to achieve your desired result.