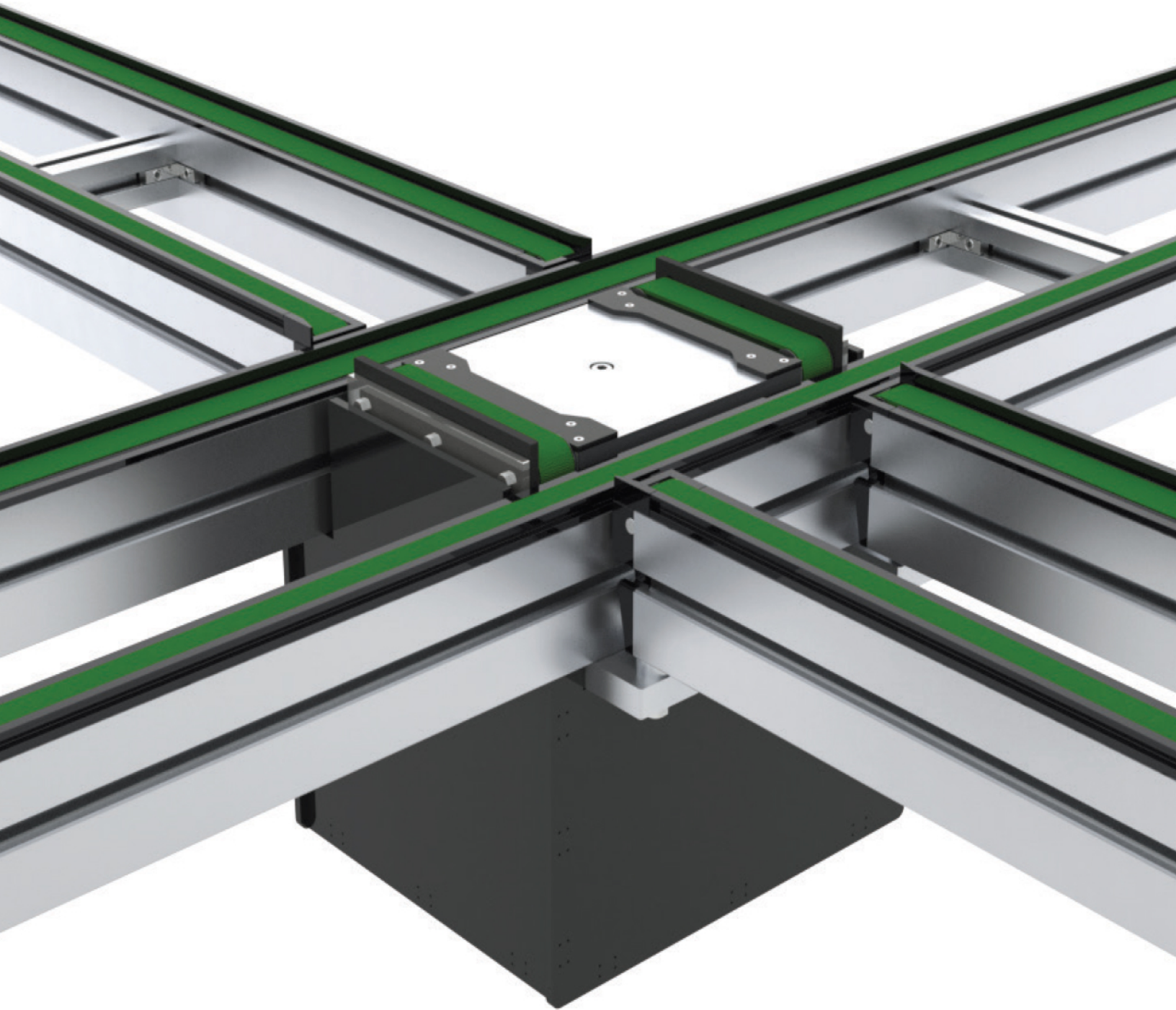




**GLIDE-LINE™**

Pallet Handling and Multi-Strand  
Panel Handling Solutions.



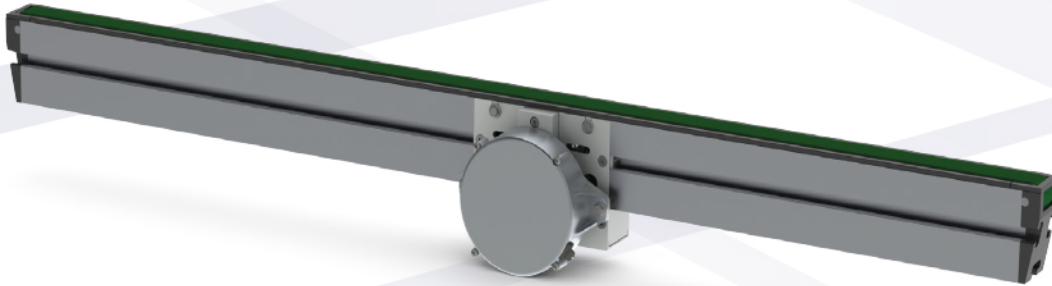
Our conveyors are as flexible  
as your imagination...



**GLIDE-LINE™**

**FAST. FLEXIBLE. EASY.**

Glide-Line™ provides a better, faster, and more flexible way to build multi-strand conveyors...with user-friendly tools and the ability to customize solutions that meet your specific needs.

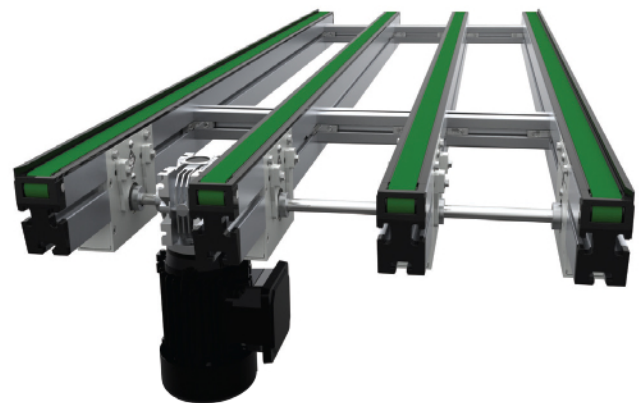


The foundation of the Glide-Line pallet handling system is a twin-strand conveyor designed to transport work piece pallets from workstation to workstation.

Transport conveyors connect in multiple ways to suit a variety of assembly system requirements and are available with multiple power input options as well, including integral 24VDC motors and controller cards.

Glide-Line can be constructed with a single strand or as many strands as needed to transport pallets and panel-like products or large, platform-type fixtures from workstation to workstation.

Quite simply Glide-Line has taken older technology and now provides unlimited solutions that are infinitely flexible.



## Unparalleled Modularity and Configurability

With millions of standard configurations, Glide-Line is the most versatile and innovative multi-strand panel and pallet-handling solution on the market.

Digital manufacturing provides complete customization to meet your specific needs and bolt-up compatibility with other leading brands assures a seamless transition when integrating with an existing system.

## Best-in-Class Solution

Highly engineered, using the most modern digital design and manufacturing techniques, Glide-Line quality exceeds that of our competition. Glide-Line is more than the next step in custom conveyor configuration; it represents the next generation in the conveyor design and fabrication process.

- All service work can be performed from above, without removing fasteners, making confined areas hassle-free
- 24VDC direct drive option for ultra-quiet maintenance free operation, absence of gearbox and connecting shafts offer ultimate design flexibility
- Precision ball bearing supported rolling elements deliver ultra-quiet, high-load, maintenance-free operation
- T5 timing belts with steel tension members guarantee positive drive, durability and reduced maintenance
- Servo-driven timing belts deliver precise, technical and directional movement
- Certified for use in clean-room environments (up to Class 100 and ISO Class 5)
- Faster than our competition, Glide-Line conveyors travel at speeds of up to 70 meters per minute
- Automated configuration tools generate complete assembly information packages, enabling the systems to be built quickly and easily
- Built, tested and assembled in-house improves installation time

## System Design Tools Boost Productivity

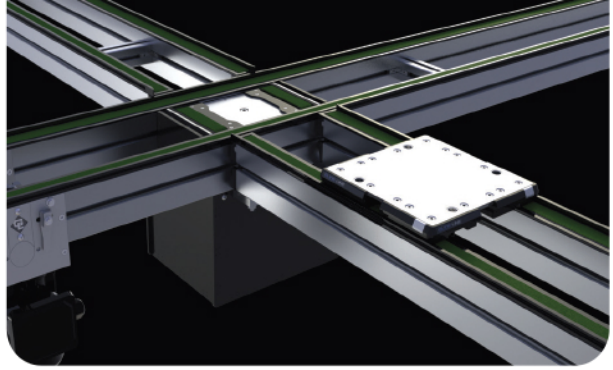
Glide-Line's advanced configuration tools streamline the design experience, offering an in-context solid model capable of updating on the fly with no need to re-configure, re-download, re-insert, and repair after every change.

Real-time visual feedback reports accurate part numbers and pricing as you work, so you'll know exactly how part number elements and application requirements affect your configuration and price. Design to purchase just got easy!



*Glide-Line Delivers*





## Efficient, Hassle-Free Customer Experience

Glide-Line was born from a conveyor system manufacturer that understood the market's needs and knew they could do better.

Modern digital fabrication methods and advanced assembly techniques ensure comprehensive design flexibility, low overall maintenance costs, competitive pricing, and faster delivery.

We developed **Glide-Line** from the ground up with a few key, driving factors in mind. First, it had to be robust and reliable. Second, it would be simple yet easily maintained and serviced. Finally, we insisted on flexible configurability; creating an efficient, hassle-free customer experience.

Please follow us on LinkedIn and all social outlets.  
Please refer to our website for the most up to date information: **[www.glide-line.com](http://www.glide-line.com)**



255 Schoolhouse Road, Souderton, Pennsylvania 18964 USA Phone: 215-721-1900 Fax: 215-721-0633 Email: [sales@glide-line.com](mailto:sales@glide-line.com)  
**[www.glide-line.com](http://www.glide-line.com)**

Part #: GLTJAP 01.18