

SLLU:

The Standard Lift Locate Unit

The Device:

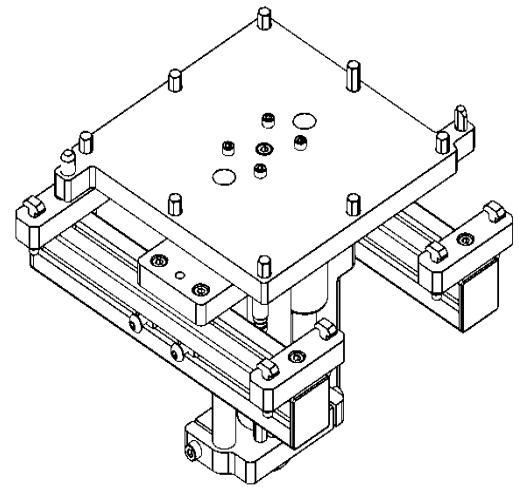
The Standard Lift and Locate Unit (SLLU) offers fully configurable vertical lift positioning, and it is suitable for applications that require repeatable, positional accuracy within $\pm 0.05\text{mm}$. Additional fit options are available on request for lower tolerance applications. Repeatability of the unit is relative to the mounting structure; for high tolerance applications a rigid machine base is recommended.

The unit comes standard with a hydraulic shock absorber to allow for a cushioned upstroke. Lift height can be adjusted by moving the bottom strike plate to the required position, and fine adjustment can be completed utilizing the shock absorber mount.

Each unit also includes two sensor mounting rails if stroke detection is required. The SLLU can be conveyor mounted or station mounted. Guarding for the bottom actuator is available.

Basic Order of Operation:

1. Pallet is conveyed to device
2. Pallet is stopped directly over device by stop (not included)
3. Lift actuates and rises, with the top plate pins engaging the Pallet's locating bushings
4. Lift runs to end of stroke
5. Operations completed to work piece
6. Lift deactivates and lowers, disengaging from pallet
7. Pallet Stop drops
8. Pallet is conveyed out of work area



Part Number: SLLU-(A)-(B)-(C)-(D)-(E)-(F)

- | | |
|----------|---|
| A | = Pallet Width Range 160mm to 1040mm |
| B | = Pallet Length Range 160mm to 1040mm |
| C | = Max Lift Distance off Belts 200mm or 40mm |
| D | = S for Standard Precision, P for High Precision |
| E | = CM for Conveyor Mounted, SM for Station Mounted |
| F | = G for Guarded, "Blank" for No Guard |

Technical Specifications

Lift range:	1.5mm to 200mm.
Lift height fine adjustment range:	+/- 10mm
Lift cylinder bore:	40mm
Lift capacity:	150 Lbs. @ 80 psi.
Pallet length range:	160mm to 1040mm in 1mm increments
Pallet width range:	160mm to 1040mm in 1mm increments
Pneumatic Ports:	¼ NPT

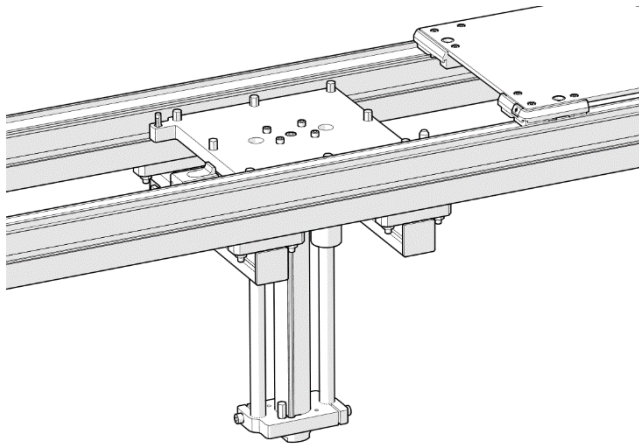


Figure 1: Lift ready to receive

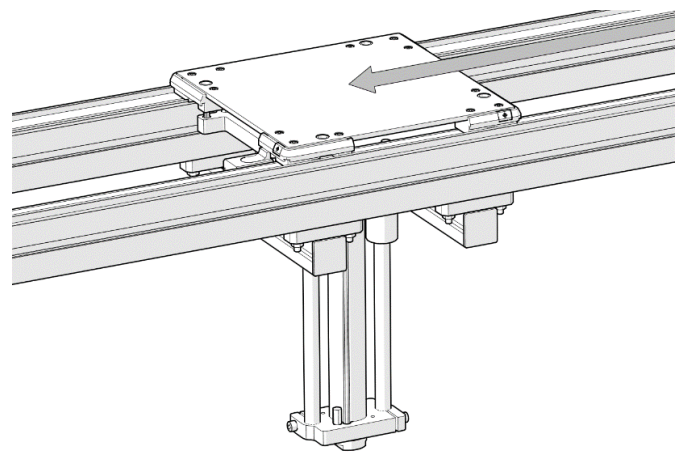


Figure 2: Lift with pallet in position (Note: pallet stop not included)

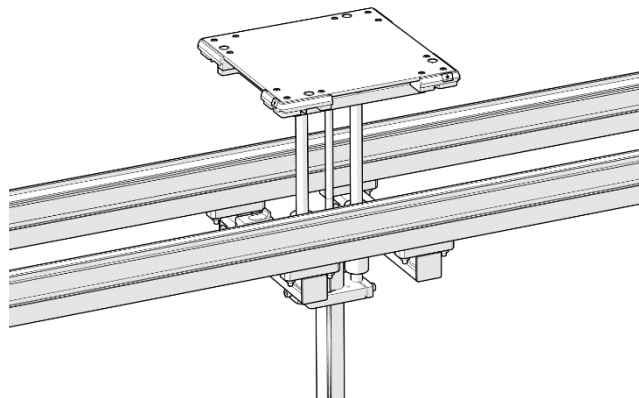


Figure 3: Lift extended, ready for processing

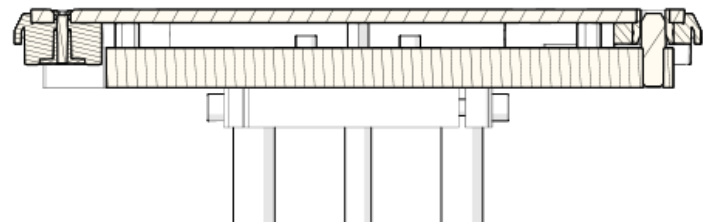
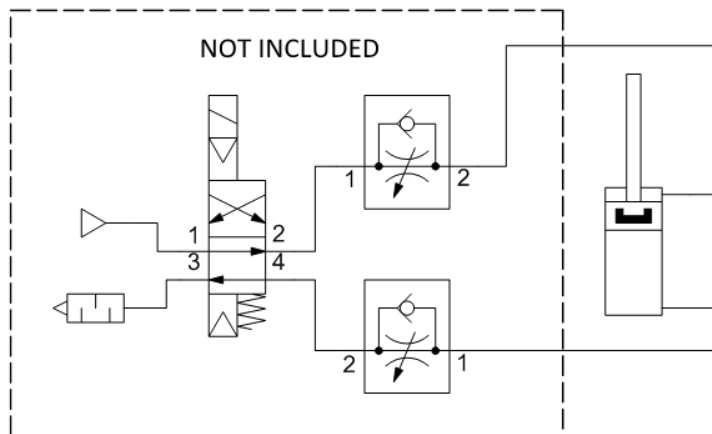


Figure 4: Detail showing pin engagement and pallet support

Recommended Pneumatic Schematic:

*Fittings and Valves not included



Recommended Sensor Brackets:

4" stroke cylinder or when (C) = 40mm – use bracket P-01027

10" stroke cylinder or when (C) = 200mm – use bracket P-01031

Recommended Sensor Package:

IFS298 (P-00911) – Inductive sensor K1, 12mm diameter, 8mm nonflush range, 3wire DC PNP, N.O, QD
 IFM EVC004 (P-00910) – IFM electronic, cordset, M12 Female R/A, 4 Wire, 5 Pin, 2m, PUR, Black